
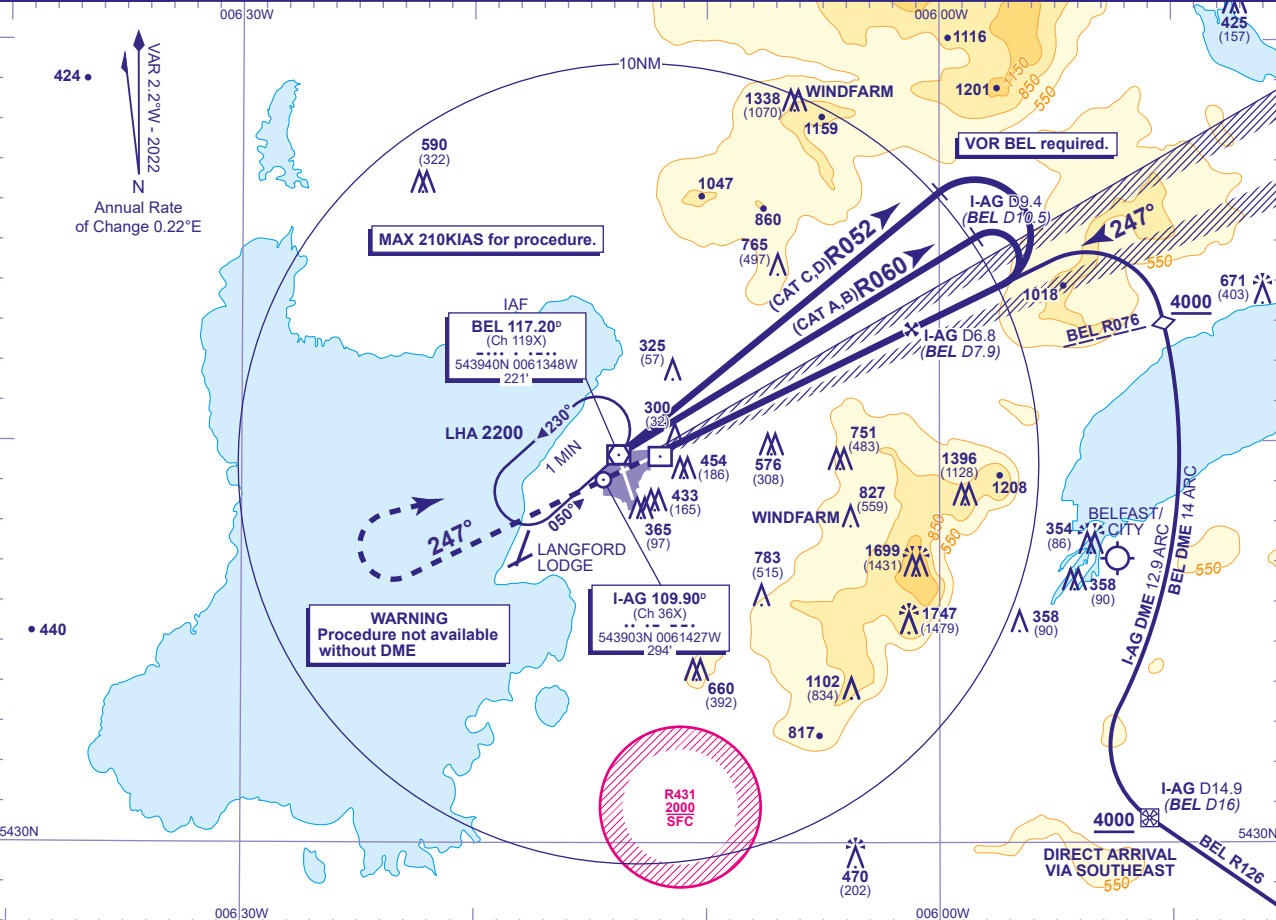


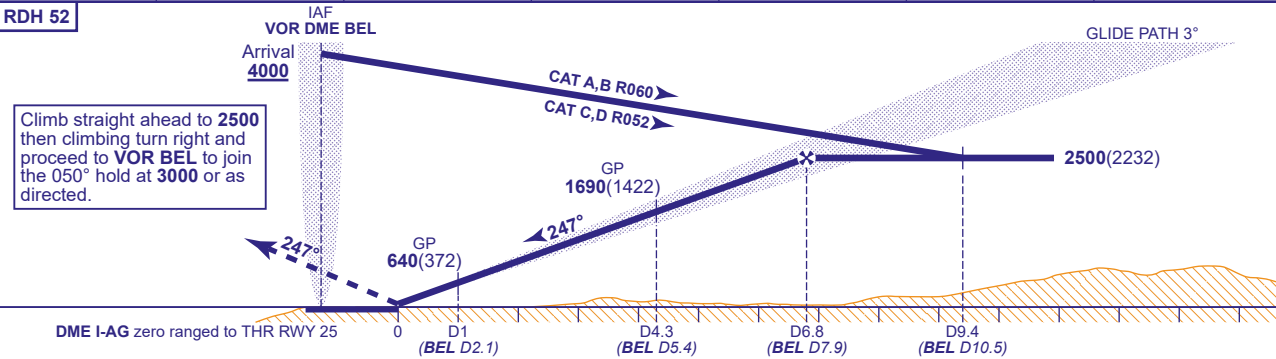
INSTRUMENT APPROACH CHART - ICAO

BELFAST ALDERGROVE
ILS/DME
RWY 25
(ACFT CAT A,B,C,D)

	APP 133.125	ALDERGROVE APPROACH	AD ELEVATION 268	TRANSITION ALTITUDE 6000
	TWR 118.300	ALDERGROVE TOWER	THR ELEVATION 268	
	RAD 120.905	ALDERGROVE DIRECTOR	OBSTACLE ELEVATION 1747 AMSL (1479) (ABOVE THR)	
	ATIS 126.130	ALDERGROVE INFORMATION	BEARINGS ARE MAGNETIC	



RECOMMENDED PROFILE GLIDE PATH 3.00°, 318FT/NM						
DME I-AG (BEL)	6(7.1)	5(6.1)	4(5.1)	3(4.1)	2(3.1)	1(2.1)
ALT(HGT)	2230(1962)	1910(1642)	1590(1322)	1280(1012)	960(692)	640(372)



Aircraft Category		A	B	C	D	Rate of descent	G/S KT	160	140	120	100	80
OCA (OCH)		CAT I	CAT II	CAT I	CAT II		FT/MIN	850	740	640	530	420
VM(C)OCA (OCH AAL)		Total Area	750(482)	840(572)	1180(912)	1290(1022)						

NOTE. Aircraft will normally be required to hold not lower than 3000 at VOR BEL.